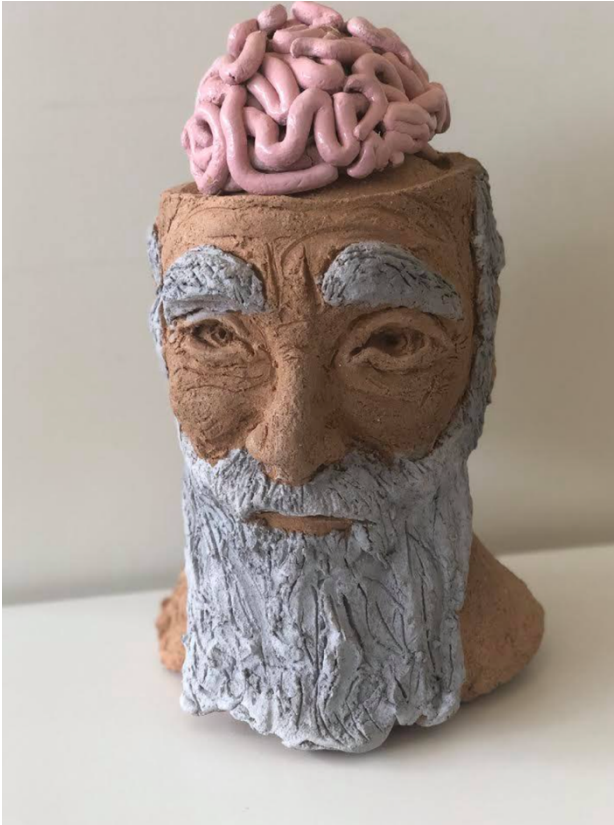


## Selected works

STEFAN THOTTUNKAL



### 'Charles Darwin'

*'Intelligence is based on how efficient a species became at doing the things they need to survive'* – Charles Darwin.

The theory of evolution, formulated by Charles Darwin, is the process of more adapted or advanced species taking the place of those who are less adapted to their environment. Despite being formulated nearly two centuries ago, the theory holds great importance in the realms of present-day genetics and now recently, artificial intelligence. This sculpture aims to pay homage to the life work and legacy of Charles Darwin.

### 'The Singularity'

This work explores the advent of *The Singularity*, the point at which artificial intelligence surpasses human capabilities. Through this sculpture, I aim to provoke discussion surrounding the fragility of human existence and the repercussions of the evolution of AI in our modern society. Through the mechanisation and distortion of the human brain, we are forced to question the legitimacy of our existence, as our collective identity continues to be undermined and fractured by 'superior' technologies. Moreover, it provokes contemplation on the future of humanity and questions the cyclical structure of evolution as one form of life replaces another.





### **'Mass Extinction'**

As someone who is passionate about sustainability, I created a cast of a trilobite fossil from melting 40 coke cans. Trilobites were once the most abundant organisms on the planet, however, after the Ordovician-Silurian extinction they slowly faded away – the only evidence of their existence being fossilised remains. The reason for this extinction was great changes in global climate leading to a loss of an estimated 85 per cent of all Ordovician species. Unless those in power listen to the threat of global warming and embrace recycling and the use of sustainable resources, this too may be our fate.